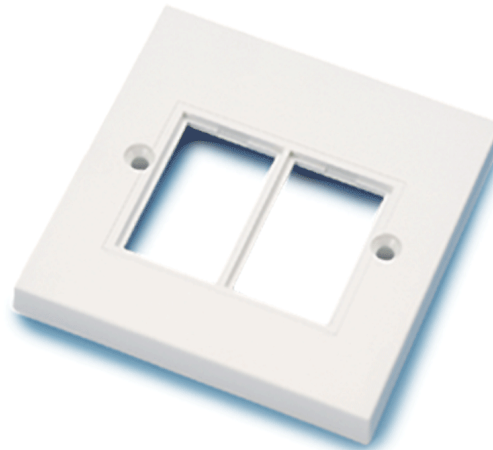


• 772809



• 772810



• 779331



• 777678



• 772812

## Part Number

Item	Description
772809	Flat Faceplate Single Gang 1x LJ6C (86x86mm), White
772810	Flat Faceplate Single Gang 2x LJ6C (86x86mm), White
772811	Flat Faceplate Double Gang 4 x LJ6C (86 x 146mm), White
779331	Low Profile Module Cat.6 LJ6C Unshielded PCB, White, Modular Insert (50 X 25mm)
772412	Low Profile Module Cat.5e LJ6C Unshielded PCB, White, Modular Insert (50 X 25mm)
777678	Angled Shutter LJ6C Keystone White, Modular Insert (50 X 25mm)
772812	LJ6C Full Blank (37x 22mm), White