



# Cat.6 UK Low Profile Module (Angle Type)

## Technical information



### Features:

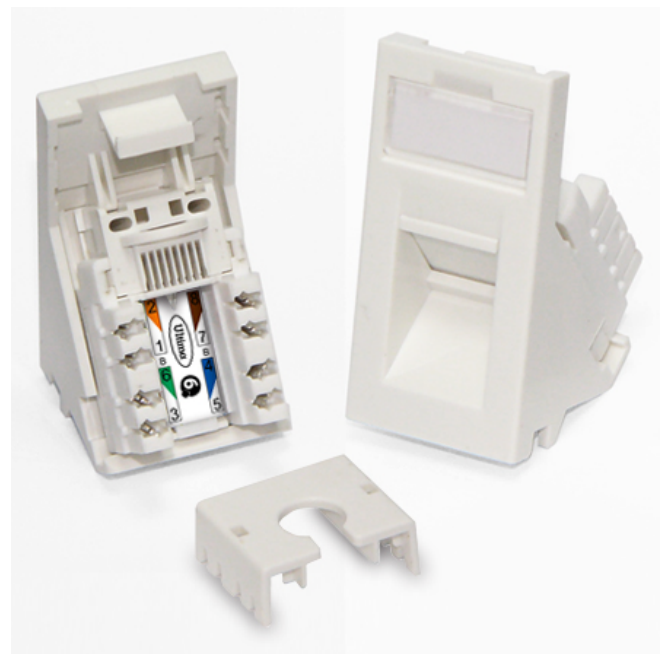
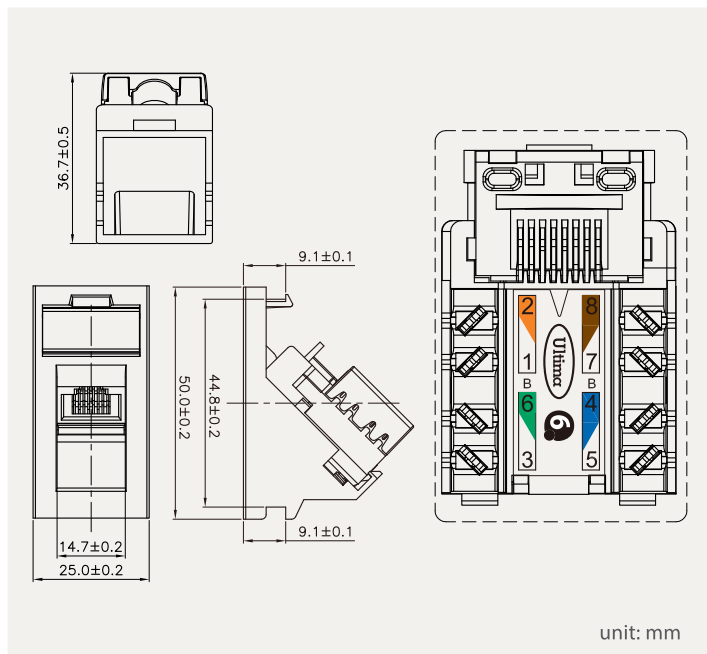
- Cat.6, KAA IDC, 50\*25mm, Angle Type, White

### Material

1. IDC CAP	ABS, UL 94-HB.
2. RJ45 Jack	Housing : ABS, UL 94-HB, with optional color.
3. Contact Bracket	PC 1250Y, UL 94V-0, Transparence color.
4. RJ45 Jack Contact	Material : Phosphor Bronze with Nickel plated. Finish : 50 micro-inch Gold plated on Plug contact area.
5. IDC	Housing : PC+Glass Fiber, UL 94V-2. Terminal : Phosphor Bronze with Tin plated.
6. PCB	FR4, UL 94V-0.

### Performance

Wiring Specification	T568B
Insertion Force	20N max.
Retention Strength	7.7 kg between Jack and Plug
Operating Temperature	-10°C to 60°C
Life (Mating Cycles)	Jack: 750 cycles min. IDC : Suitable for 22-26 AWG stranded and solid wire, compatible with 110 punch down tool / Krone punch down tool.



### Part Number

Item	Description
796053	Cat.6 UK Low Profile Module, KAA IDC, 50*25mm, Angle Type, White